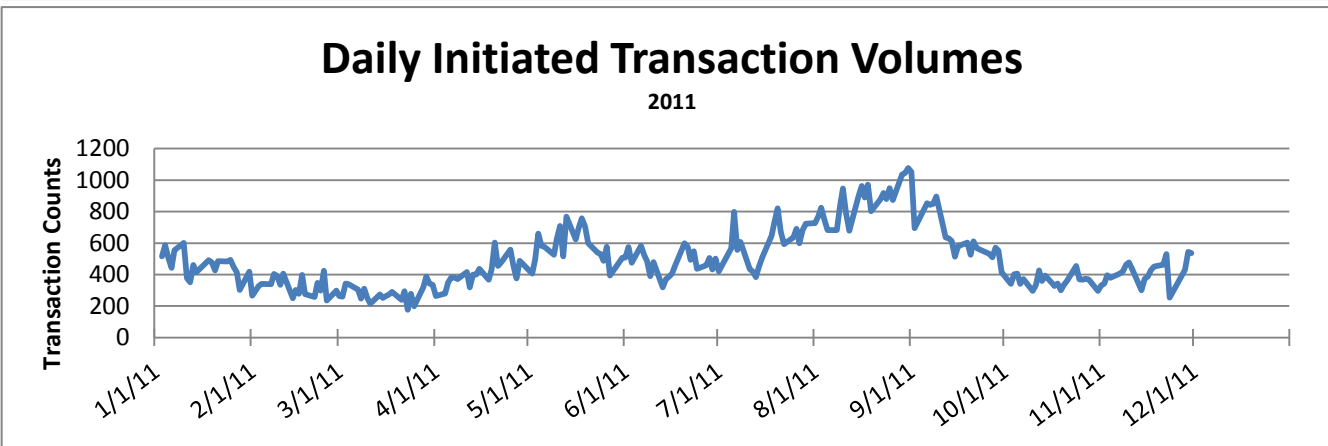
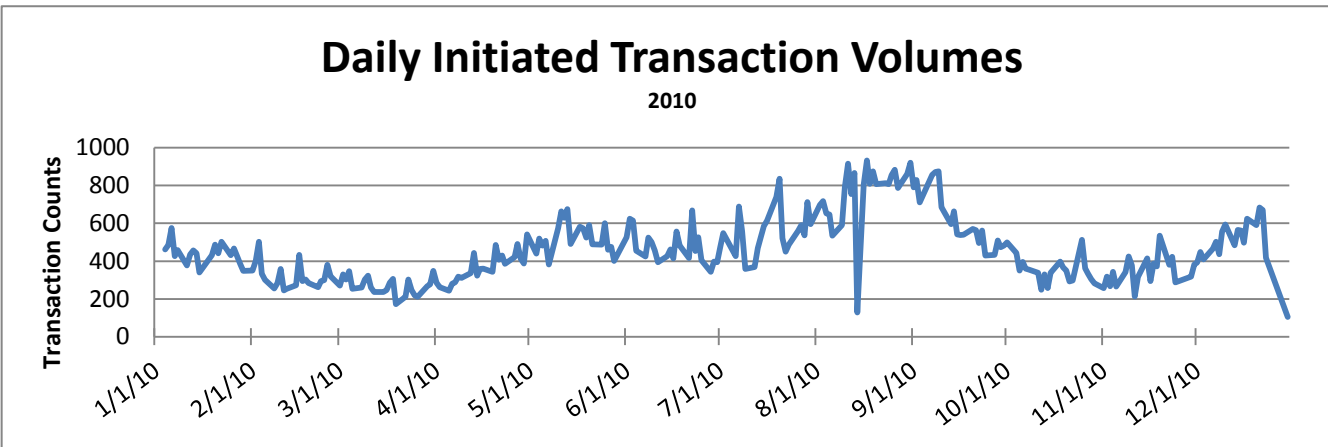
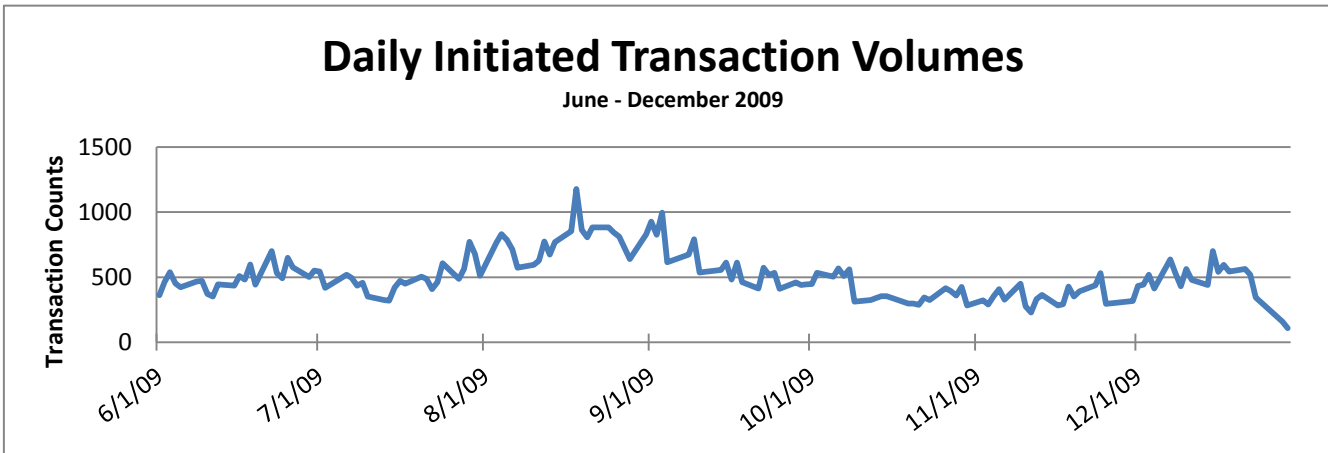


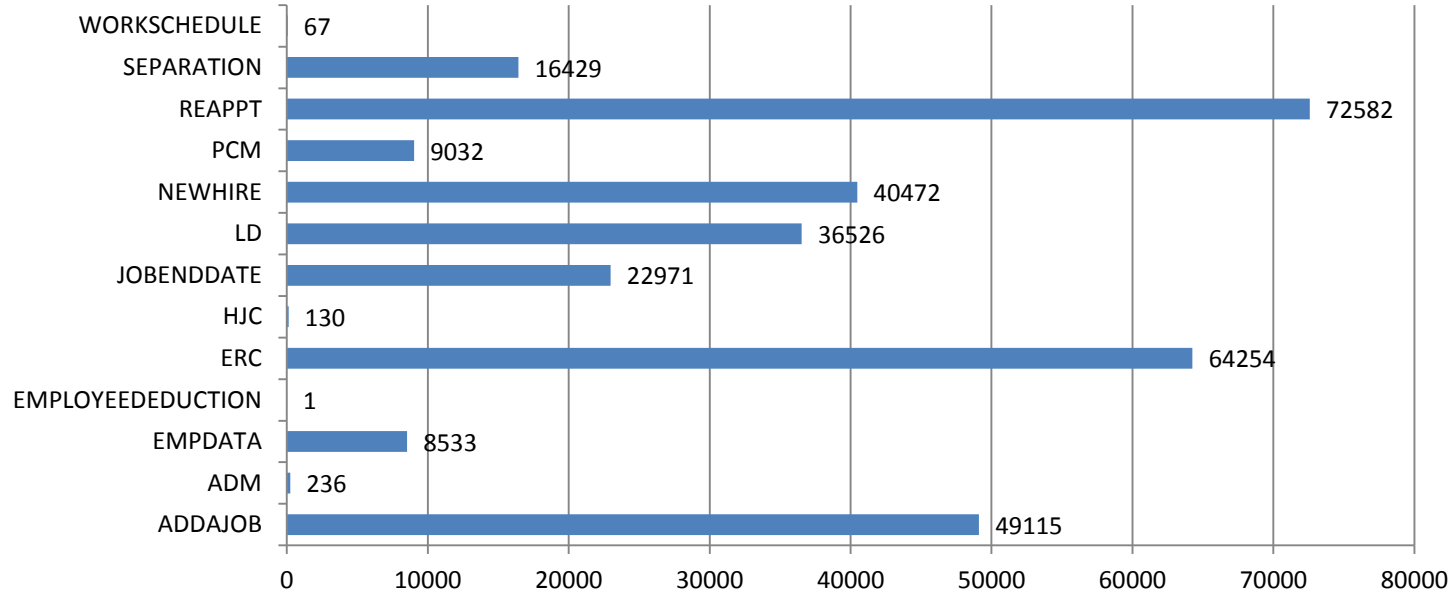
# HR Front End Metrics - As of 11/30/11



# Completed Transactions

Feb 22, 2009 - Nov 30, 2011

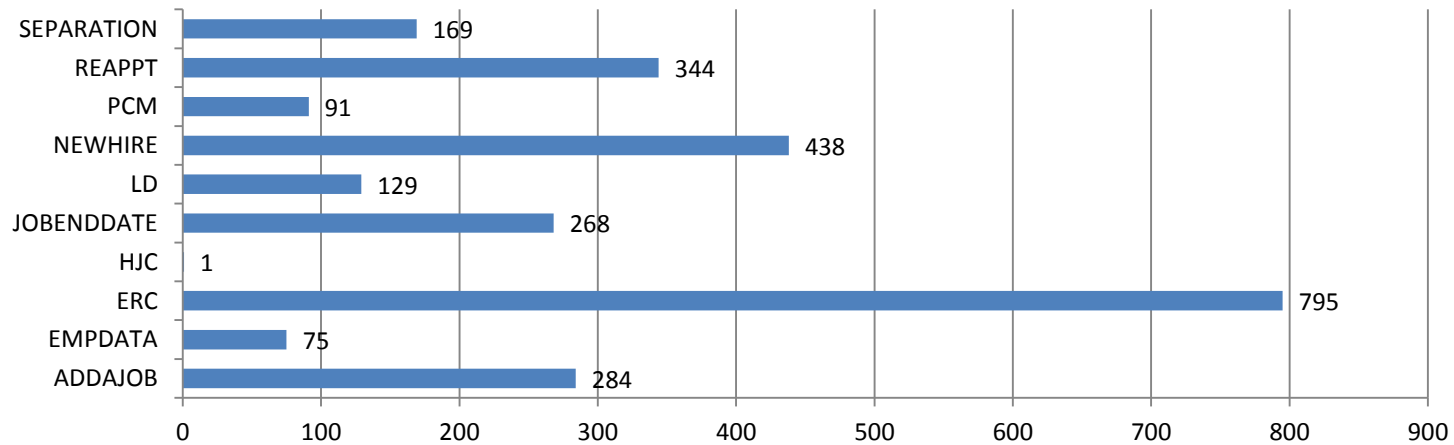
320,348 Transactions



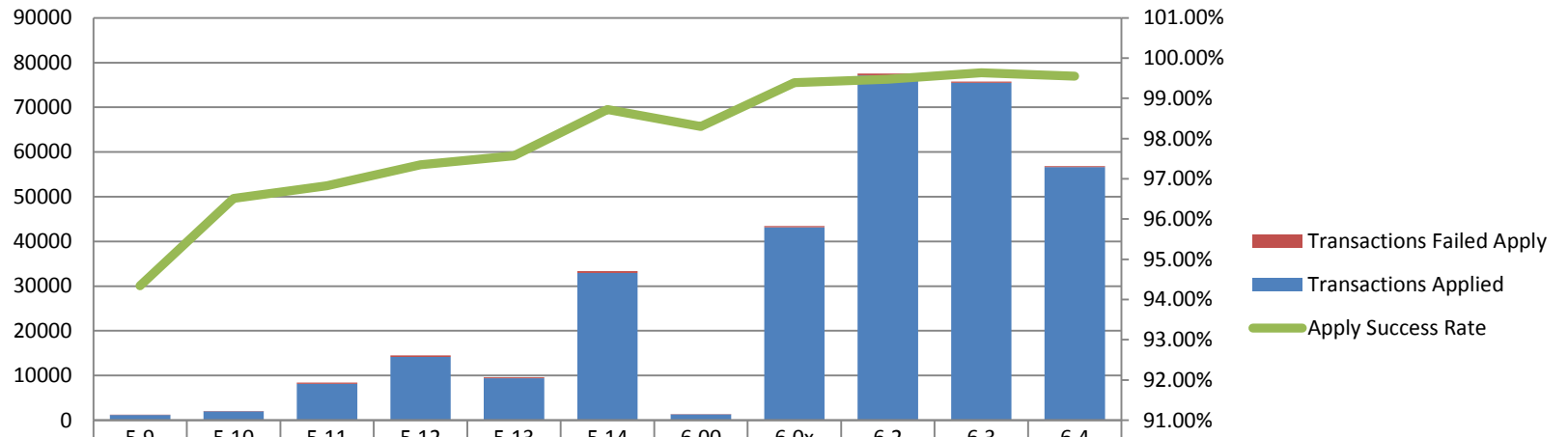
# Failed Transactions by Type

Feb 22, 2009 - Nov 30, 2011

2605 Transactions



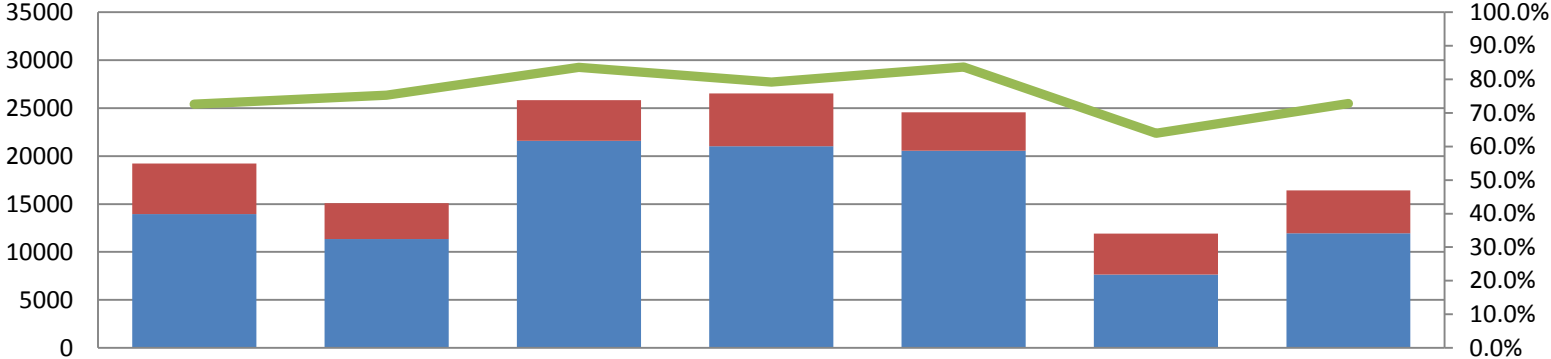
## Transaction Volume/Apply Stats by Release



Transactions Failed Apply	69	72	268	385	233	425	23	263	405	275	256
Transactions Applied	1151	1991	8176	14126	9377	32926	1331	43177	77129	75507	56608
Apply Success Rate	94.34%	96.51%	96.83%	97.35%	97.58%	98.73%	98.30%	99.39%	99.48%	99.64%	99.55%

# Banner Forms/HR Front End - Transactions Entered

June - December 2009

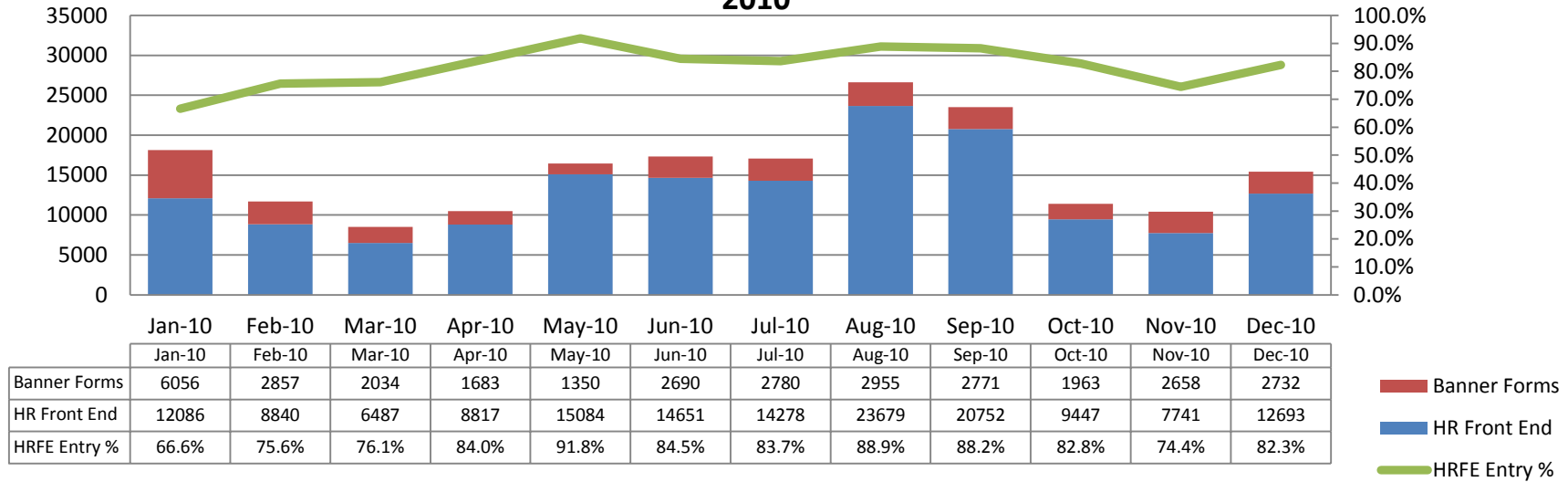


	Jun-09	Jul-09	Aug-09	Sep-09	Oct-09	Nov-09	Dec-09
Banner Forms	5266	3737	4243	5511	4010	4295	4457
HR Front End	13955	11360	21590	21016	20551	7629	11960
HRFE Entry %	72.6%	75.2%	83.6%	79.2%	83.7%	64.0%	72.9%

- Banner Forms
- HR Front End
- HRFE Entry %

## Banner Forms/HR Front End - Transactions Entered

2010



## Banner Forms/HR Front End - Transactions Entered

2011

