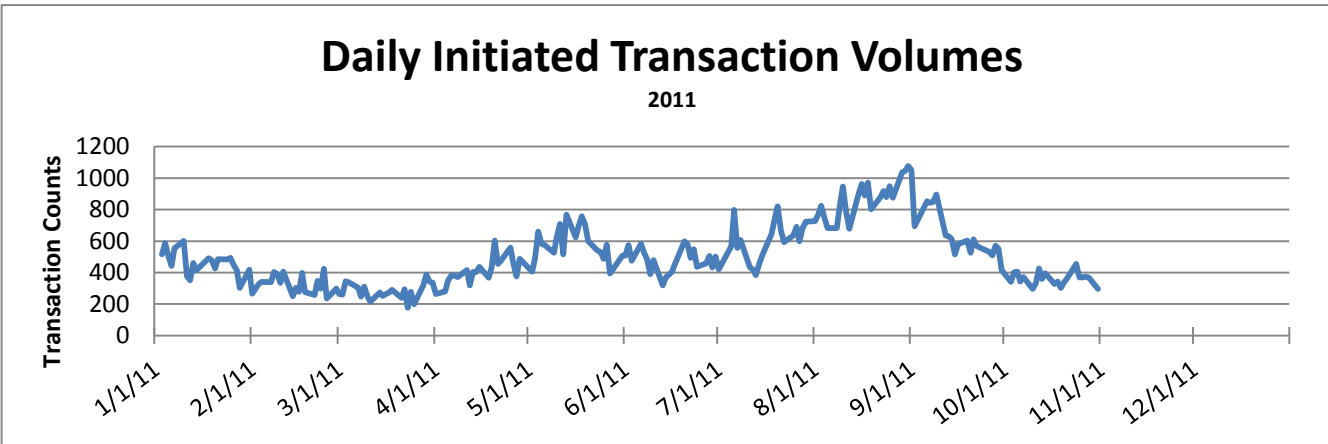
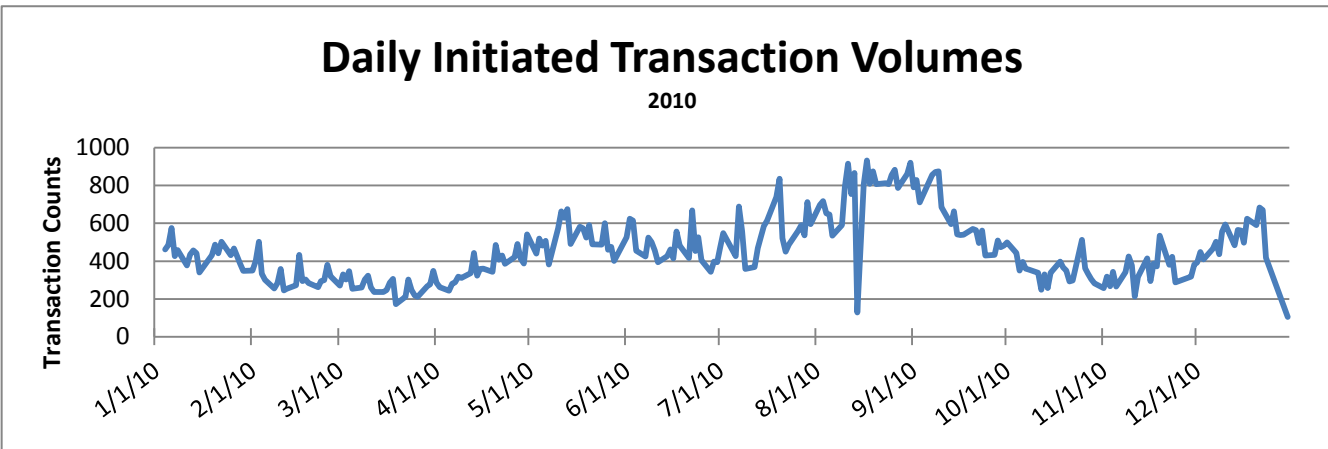
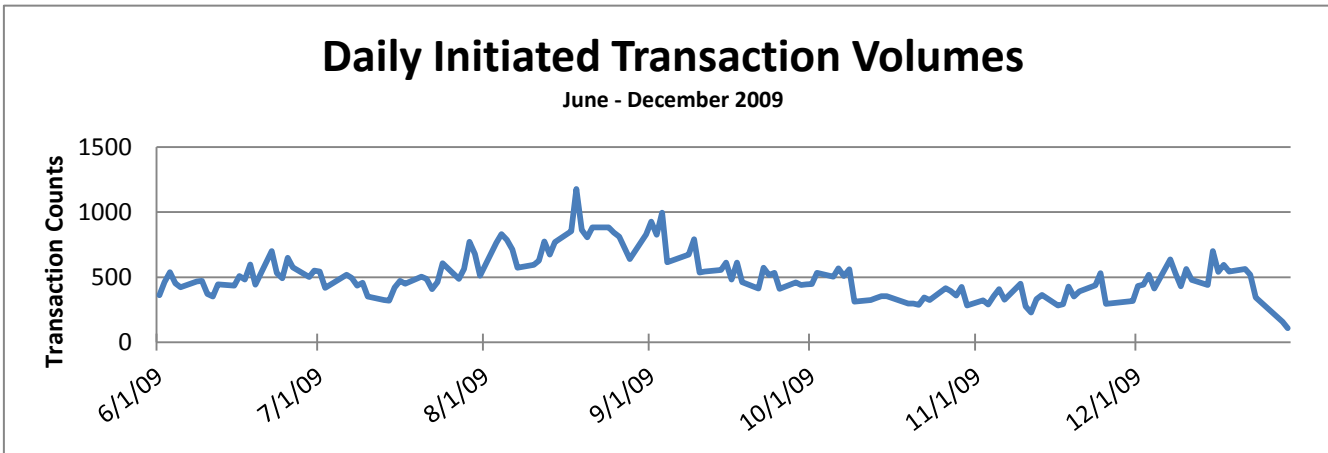


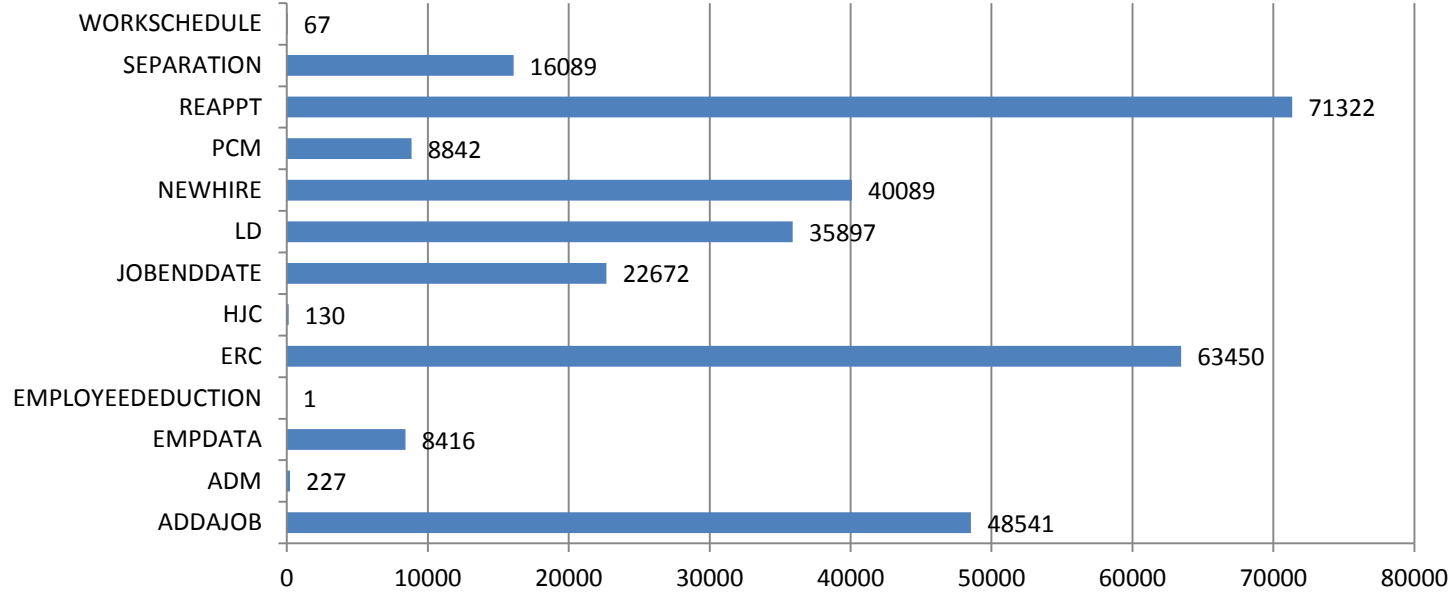
HR Front End Metrics - As of 10/31/11



Completed Transactions

Feb 22, 2009 - Oct. 31, 2011

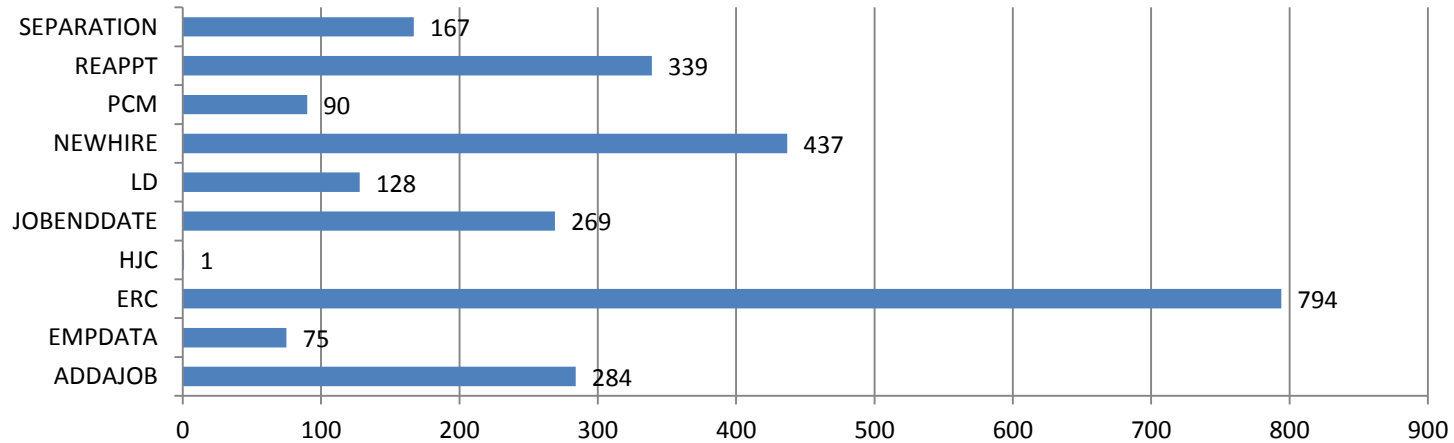
315,743 Transactions



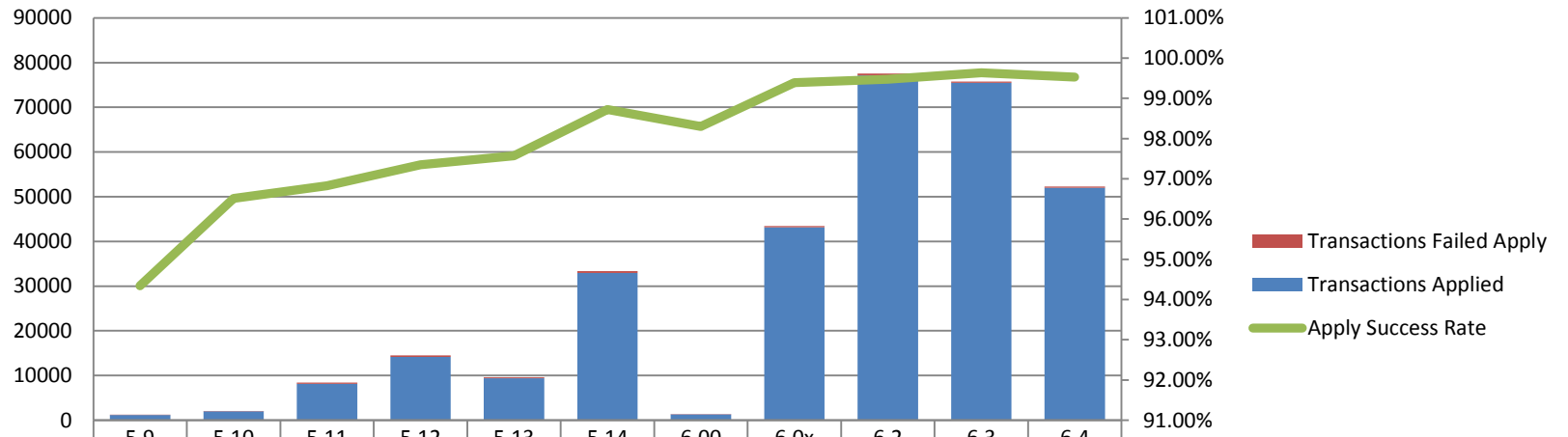
Failed Transactions by Type

Feb 22, 2009 - Oct 31, 2011

2,595 Transactions



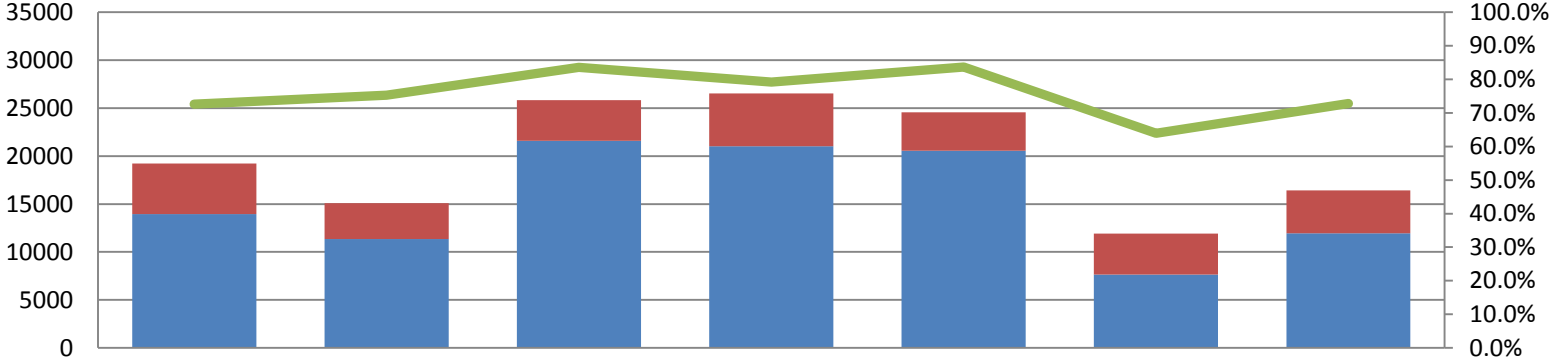
Transaction Volume/Apply Stats by Release



	5.9	5.10	5.11	5.12	5.13	5.14	6.00	6.0x	6.2	6.3	6.4
Transactions Failed Apply	69	72	268	385	233	425	23	263	405	275	246
Transactions Applied	1151	1991	8176	14126	9377	32926	1331	43177	77129	75507	52003
Apply Success Rate	94.34%	96.51%	96.83%	97.35%	97.58%	98.73%	98.30%	99.39%	99.48%	99.64%	99.53%

Banner Forms/HR Front End - Transactions Entered

June - December 2009

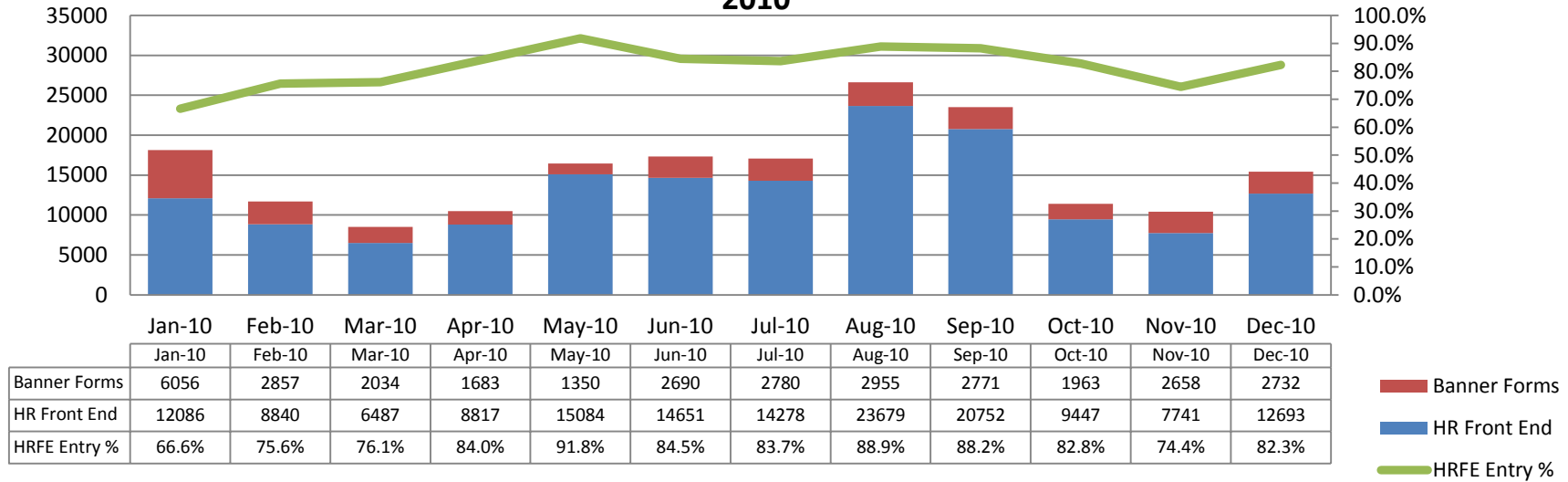


	Jun-09	Jul-09	Aug-09	Sep-09	Oct-09	Nov-09	Dec-09
Banner Forms	5266	3737	4243	5511	4010	4295	4457
HR Front End	13955	11360	21590	21016	20551	7629	11960
HRFE Entry %	72.6%	75.2%	83.6%	79.2%	83.7%	64.0%	72.9%

- Banner Forms
- HR Front End
- HRFE Entry %

Banner Forms/HR Front End - Transactions Entered

2010



Banner Forms/HR Front End - Transactions Entered

2011

